

Value Added Solutions

Jacket material & marking options



In order to optimize handling, installation and plant maintenance, Tracepak and Stackpak can be manufactured with a variety of jacket colors and custom text messages. Transport tubing can also be color coded and marked. Sequential foot / meter marking is standard on the products. Other text ideas can include location of temperature sensors, instrument / analyzer tag numbers, cautions, temperature ratings, maintenance reminders etc.

Factory finished ends



Tracepak and Stackpak sample bundles can be made in both exact and cut to length configurations. Factory finished ends allow for quick and easy connections while minimizing field installation variability. Accessories like weather proof boots, power connection and termination kits, as well as approved power, messenger and signal wires can be specified and installed at the factory.

Temperature sensors, and control schemes



RTD and thermocouple selection and placement are critical elements in sample system accuracy. O'Brien Analytical treats every bundle as a unique configuration and provides the optimal temperature measurement and control solution.

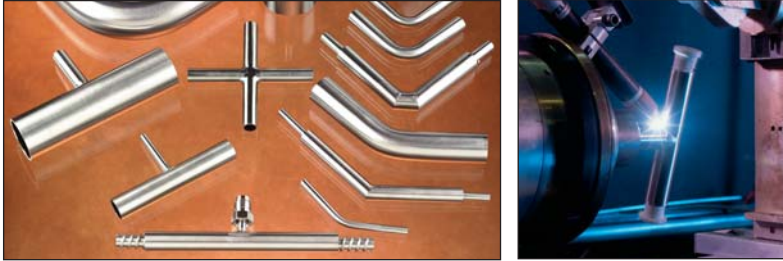
Custom bundle & umbilical configurations



Probe support bundles, unheated tubes, messenger wires, telephony, optic fiber elements – O'Brien Analytical can design and manufacture a variety of customer umbilical configurations.

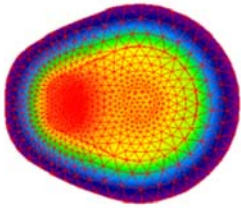
Value Added Solutions

Orbital weld fittings



Mechanical fittings can create problems with sample entrapment. O'Brien Analytical manufactures a full range of orbital weld fittings that enhance sample stream consistency.

Design, Test, and Validation



O'Brien Analytical provides detailed test reports with each Tracepak and Stackpak shipment. Each bundle is tested specifically for: Hi pot / megger, thermal output, temperature sensing accuracy, dimensions, and is tagged with a unique batch number.

Parallel Construction

PARALLEL: Easy to bend • 8" Bend Radius • Tubes Stay Round • Ease of Connection



CABLED: Difficult to Bend • Long Sweeping Bends • Tube Ovality Problems • Tubes Kink



O'Brien Analytical simplifies tubing bundle installation with their unique parallel configuration, in which process and tracer lines are always parallel inside the bundle. The bundle is much easier to bend during field routing and hookup because all tubes bend together and not against each other. This type of construction also allows for a much tighter minimum bend radius of 8" (20cm). Cabled bundles minimum bend radius can exceed 20" (50cm).

coroSERVICES™: Best Practices



O'Brien Analytical's coroSERVICES team is committed to the promotion of best practices with sample transport systems. With increased accuracy capabilities of analyzers, transport system reliability is even more important. Whether it is on our web site or at a training seminar, O'Brien Analytical provides years of best practice expertise. coroSERVICES provides full turnkey solutions to the process and emissions analyzer markets.



ISO 9001:2000



Certificate No.
CC1504-001122

Worldwide Offices:

1900 Crystal Industrial Ct. • St. Louis, MO 63114 • Ph 314/236-2020 • Fax 314/236-2080
Mallekotstraat 65 • B 2500 Lier Belgium • Ph (+32) 3 491 9875 • Fax (+32) 3 491 9876
Suite 400 • 609 14th Street NW • Calgary, AB T2N 2A1 • Ph 403/730-7277 • Fax 403/730-7279
sales@obcorp.com • www.obrien-analytical.com