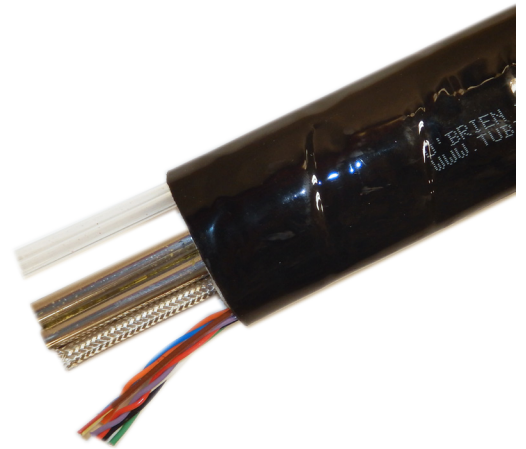


Wet Extractive Systems

- Permanent and Lightweight Portable Systems
- High Temperature Maintain up to 450°F (230°C)
- Series Heater:
 - Consistent and Uniform Temperature Throughout
 - Field Length Adjustable
- 250' Circuit Lengths
 - Multiple Circuits Available for Longer Lengths
- Parallel Tube Construction 12" Bend Radius
- Tube and Wire Configurations Per Customer Specification



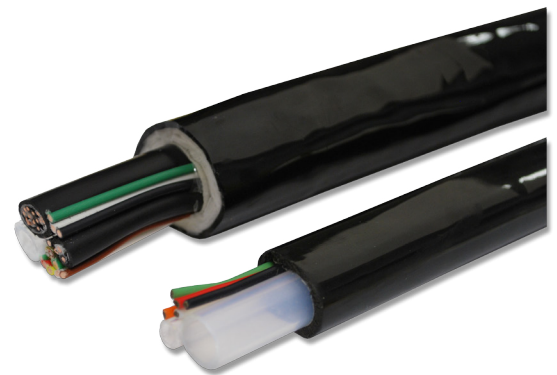
Dry Extractive/Dilution Systems

- Permanent and Lightweight Portable Systems
- Sensor Tube
- Temperature Maintain up to 250°F (120°C)
- Self-Regulating or CPD Heater
- Up to 500' Continuous Circuit Lengths:
 - Multiple Circuits Available for Longer Lengths
- Parallel Tube Construction 12" Bend Radius
- Tube and Wire Configurations Per Customer Specification



Probe Support Umbilical

- Maximum Operating Temperature is 175°F (80°C)
- Medium Ambient Conditions, No Heater Necessary
- Lower Replacement Cost for Heated Sample Line Bundle
- Reduced Installation Costs
- Tube and Wire Configurations Per Customer Specification



Value-Added Solutions

Tubing Bundles

- Parallel Tubing Construction
- 12" Bend Radius
- Bundle Markings (Power, Probe, Sensor Location)
- Tube Markings and/or Color Tubing
- Color PVC or TPU Jackets
- Custom Jacket Imprint
- End Preparation Available

Sample Transport TUBes

- High Purity PFA Tubing:
 - Burn-In Not Required
- Passivated Tubing - Rinsed with hot deionized water and purged with hot dry (99.9%) Nitrogen
- TrueTube™ Electropolished and Silconert® 2000 Coated Tubing available

Hg+ STACKPAK Sample Transport System for Low Level Mercury Analysis



SensorTube™ and Sensor Kit

SensorTube creates a pathway for the sensor kit to be positioned up to 15' (3m) from the control end without any special tools. It is available in long continuous lengths that can be field cut to specific lengths as required. The specially sized bulb and lead construction of the kit has been inserted through more than five ninety degree bends without problems. Measured temperature accuracy of within 2°F of factory installed sensors.

RTD Kit includes a 100 Ohm / PT100, 3 wire sensor with twenty feet of fluoropolymer jacketed leads and an entry seal.

Thermocouple Kit includes a thermocouple with twenty feet of fluoropolymer jacketed leads and an entry seal.



O'BrienSERVICES

O'Brien Analytical's O'BrienSERVICES team is committed to the promotion of best practices with sample transport systems. With increased accuracy capabilities of analyzers, transport system reliability is even more important. Whether it is on our website or at a training seminar, O'Brien Analytical provides years of best practice expertise. O'BrienSERVICES provides full turnkey solutions to the process and emissions analyzer markets.

O'BRIEN *services*

Silconert® is a registered trademark of Silcotek Corporation.
Specifications subject to change without notice.

©2014, by AMETEK, Inc. All rights reserved · QLT-HGPAK · 30 April 2014



USA · BELGIUM · CHINA · SINGAPORE · RUSSIA
sales.obrien@ametek.com · www.obcorp.com

