



T-SERIES ENCLOSURE HEATER



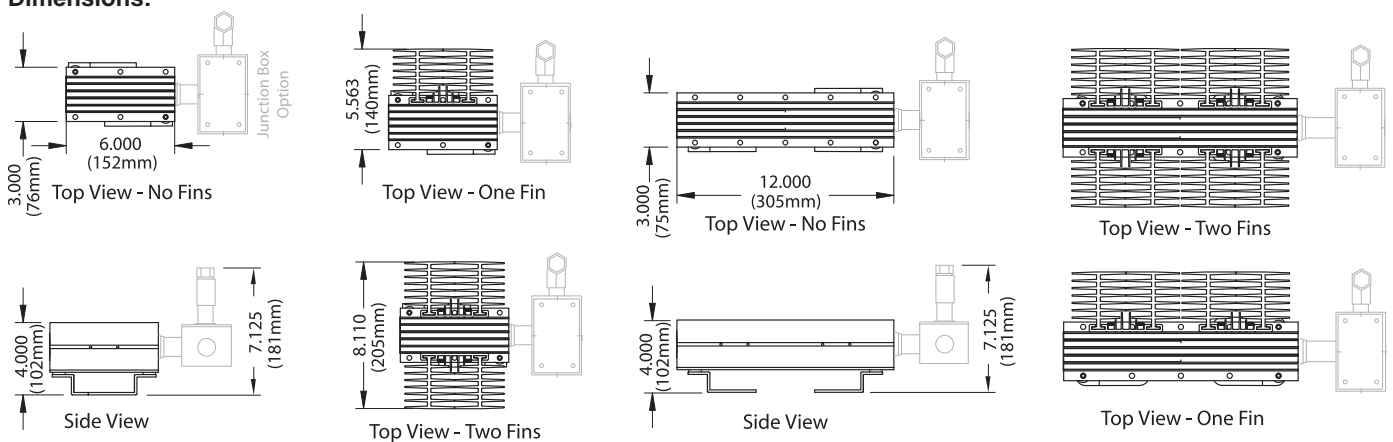
T-Series enclosure heaters are designed with standard redundant internal protection for long trouble free operation. They are also configurable for horizontal or vertical installation with maximum efficiency. Standard

temperature ratings and operating voltages are listed. Consult factory for other T-ratings, operating voltages and temperature control set points if required.

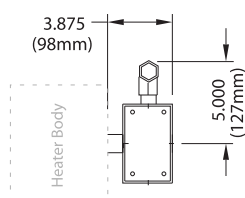
Specifications:

Wattage:	Up to 400 watts / unit for T3 Up to 100 watts / unit for T4
Supply voltage:	115, 230 and 277VAC (special order 12 & 24VDC, and 100 & 208VAC)
Classifications:	NEC & CSA: Class I Division 1 Group A, B, C, & D (T2 or T3), ATEX: Zone I EEx d IIC T3
Mounting:	Horizontal or Vertical
Control Options:	Tamper Proof Thermostat - 50°F/10°C, 75°F/25°C, 100°F/40°C, 125°F/50°C, 150°F/65°C

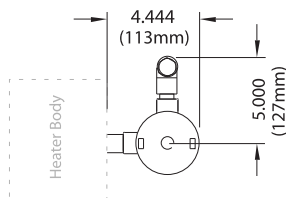
Dimensions:



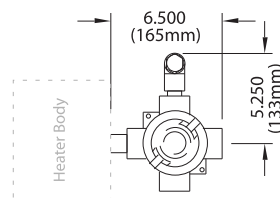
D2 Option



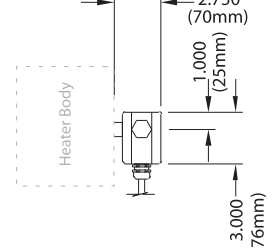
CD Option



AB Option



EX Option



Model Number*

T-Series Heater	T	X	#	#	##	XX	#	XX	X	X
Body Size										
6" (150mm) Standard Body		S								
12" (305mm) Extended Body		E								
T-Rating										
T3 – Standard S and E body (maximum surface temperature 200°C/392°F)			3							
T4 – S Body Only (100W, 50°F/10°C maintain only)				4						
Voltage										
115 VAC				1						
230 VAC				2						
277 VAC				3						
Wattage*										
100 W					10					
150 W					15					
200 W					20					
300 W (TE Body Only)					30					
400 W (TE Body Only)					40					
600 W (T2 and TE Body Only)					60					
Approvals										
CI I, Div 2 Gp ABCD						D2				
CI I, Div 1 Gp CD						CD				
CI I, Div 1 Gp ABCD						AB				
EEX d IIC						EX				
Thermostat										
50F (10C)							C			
75F (25C)							E			
100F (40C)							G			
125F (50C)							J			
150F (65C)							M			
Junction Box										
Standard								JS		
Increased Volume (Accommodate termination of additional tracer. Remote mounted with EX option)								J1		
Increased Volume (Accommodate termination of additional tracer. Remote mounted with EX option)								J2		
Fin Sections*										
None									9	
One Fin									1	
Two Fins									2	
Orientation										
Horizontal										H
Vertical										V
Tracer Power Connection Kits for T-Series Heater										
(Must select optional J1 or J2 junction box for additional volume)										
Y	CSA & FM Div 2 - B, N, J, P, JV or JN tracers									
TC	CSA Div 1 - B, N, J, or P tracers									

* Refer to T-Series Enclosure Heater Sizing Chart for additional ordering and selection information.

Specifications subject to change without notice.



O'Brien Corporation Offices

USA: 1900 Crystal Industrial Court • St. Louis, Missouri 63114 USA • Ph: +1 (314) 236-2020 • Fax: +1 (314) 236-2080

BELGIUM: Mallekotstraat 65 • B2500 Lier Belgium • Ph: +32 (0)3 491 9875 • Fax: +32 (0)3 491 9876

CHINA: Suite1605A, 16F Feidiao • International Building • 1065 Zhao Jia Bang Road • Shanghai 200030 • Ph: +86 21 51581635 • Fax: +86 21 51581686

SINGAPORE: No. 14 Robinson Road • #13-00, Far East Finance Building • Singapore 048545 • Ph: +65 6387 8907 • Fax: +65 6387 9808

www.obcorp.com • sales@obcorp.com