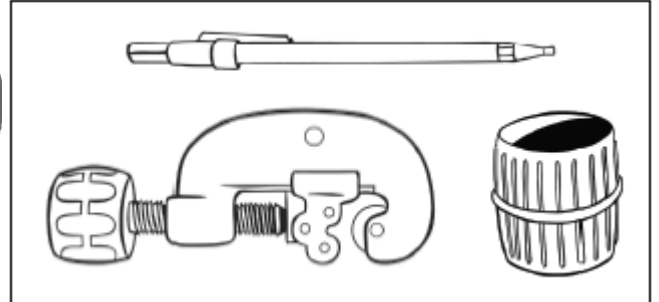


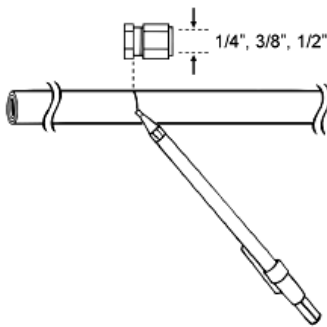


JACKET REMOVAL TOOL INSTRUCTIONS

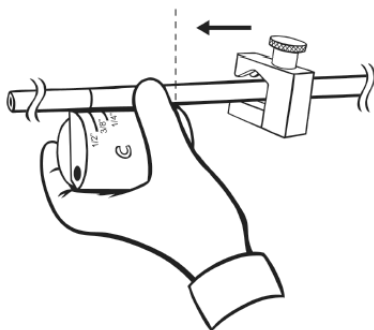
TRACEPAK[®] MJ Jacketed Tubing
Corrosion Prevention for Small Bore Tubing



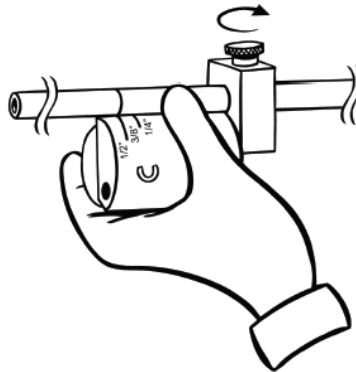
For 1/4" - 1/2" (3 - 12mm) diameter tubing.



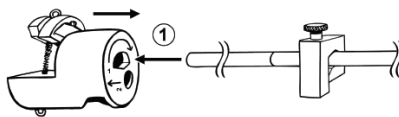
1. Mark finished length of tube for fitting.



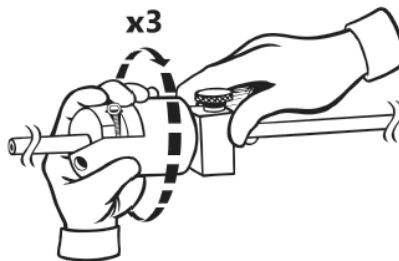
2. Align finished length with tube size and slide stop clamp flush with back of tool.



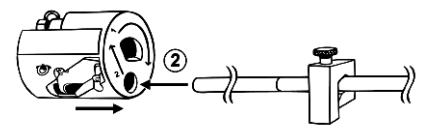
3. Tighten stop block.



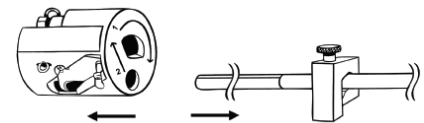
4. Open spring arm and slide tool over tube with hole 1.



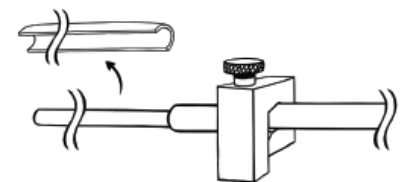
5. Rotate tool 3X around tube. Spring will provide sufficient tension.



6. Remove tube from hole 1 and slide tool over tube into hole 2. Guide hook between tube and jacket.

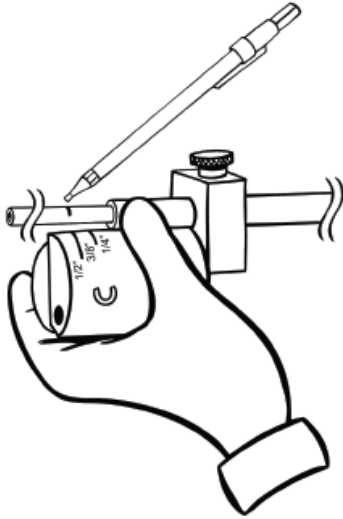


7. Continue sliding tool over tube until you reach the stop clamp. Remove tool from tube.

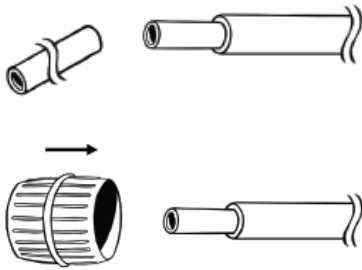
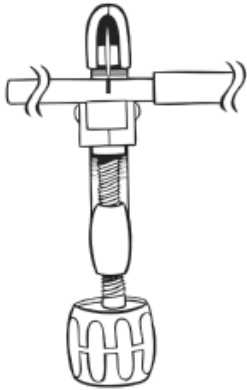


8. Peel off jacket.

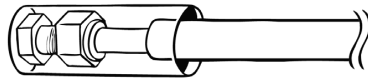
Jacket Removal Tool Instructions



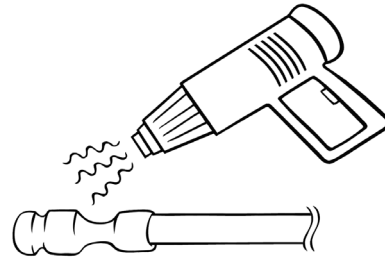
9. Use marking gage on tool to remark where the tube should be cut.



10. Use standard tube cutter and deburring tools to finish.



11. Slide heat shrink seal over tube and insert tube in fitting.



12. All ends MUST be sealed with self-fusing silicone tape, heat shrink or special jacketed tube fittings.